

Hi Shine Flooring

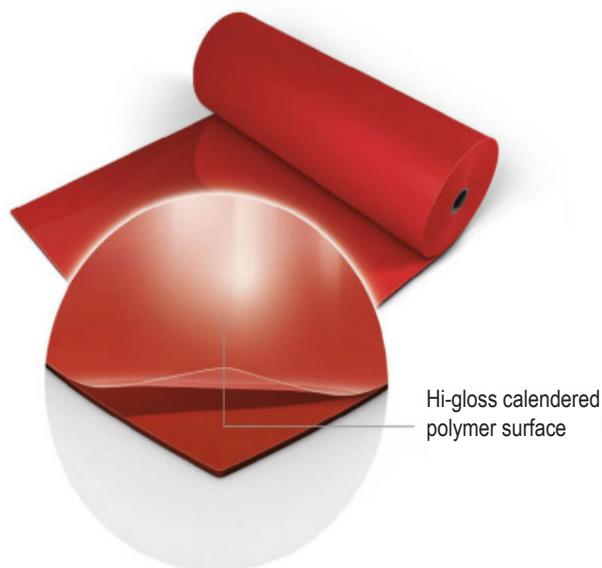
Ref: 2360 to 2380



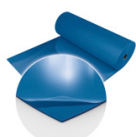
Our **Hi Shine Harlequin** flooring is **Bfl-s1** flame-retardant rated and is **extremely scratch-resistant** thanks to its polymer-based calendared surface.

It's a perfect way to dress **TV studios** or for equipping **stage floors** for fashion shows, product launches, and more...

Hi Shine Flooring will totally transform your floors thanks to a **high-gloss surface** that guarantees sensational on-stage light shows.



Colours



Blue
700



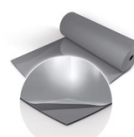
Red
200



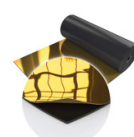
Black
003



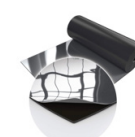
White
002



Grey
100



Gold
092



Silver
090

Colour only available in 20 linear metres

Colour only available in 30 linear metres

Colours available in 10, 15, 20 and 30 linear metre rolls

Characteristics

Name	Hi Shine Flooring			
Reference	2360	2365	2370	2380
Roll length	10 m	15 m	20 m	30 m
Width	150 cm			
Cut-to-length	No			
Weight	1960 g/m ²			
Thickness	1.5 mm			
Composition	PVC + calendered polymer surface			
Flame-retardant rating	 Bfi-S1 (EN 13501-1)			
Sound insulation	3 dB (EN ISO 717-2)			

Additional information

Appearance	High-gloss finish
Supplied in	Rolled full-width
Care	Wash with soapy water then rinse with fresh water.
Storage recommendations	Storage of rolled widths Store indoors (away from light and humidity) At room temperature (approx. 23°C) Storage should not exceed 6 months between use.
Directions for use	Can be installed directly on soft flooring (lino, vinyl, parquet, etc.) Not recommended for installation on hard flooring (tiles, concrete, etc.) To allow for the possibility of slight shrinkage of this product due to changes in temperature, we recommend ordering sections 2% longer than the length to be covered. Flooring can be cut to size on-site using a Stanley knife and ruler if necessary. To achieve optimum flatness, we recommend storing the product in a warm place (approx. 23°C) for 24 hrs prior to assembly. As necessary, sections can be fixed to the floor using double-sided adhesive tape and/or assembled using clear adhesive tape for dance flooring, to be applied to the upper surface of the flooring. We recommend laying the flooring out on the floor for 12 hrs before securing with adhesive tape.
Recommended use	Installation in dance studios Dressing stages (operas, TV studios, shows, catwalks, etc.)
Accessories	Storage trolley for dance flooring

CONTACT OUR EXPORT TEAM

+33 (0)6 23 21 50 28



export@azur-scenic.com

The information in this document provides generic values that describe only the standard technical specifications and chemical composition of the products concerned. No guarantee is offered. Any images are non-contractual. The names of the colours are given for information purposes only and do not guarantee a specific colour.