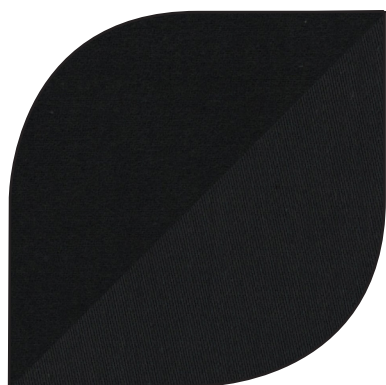
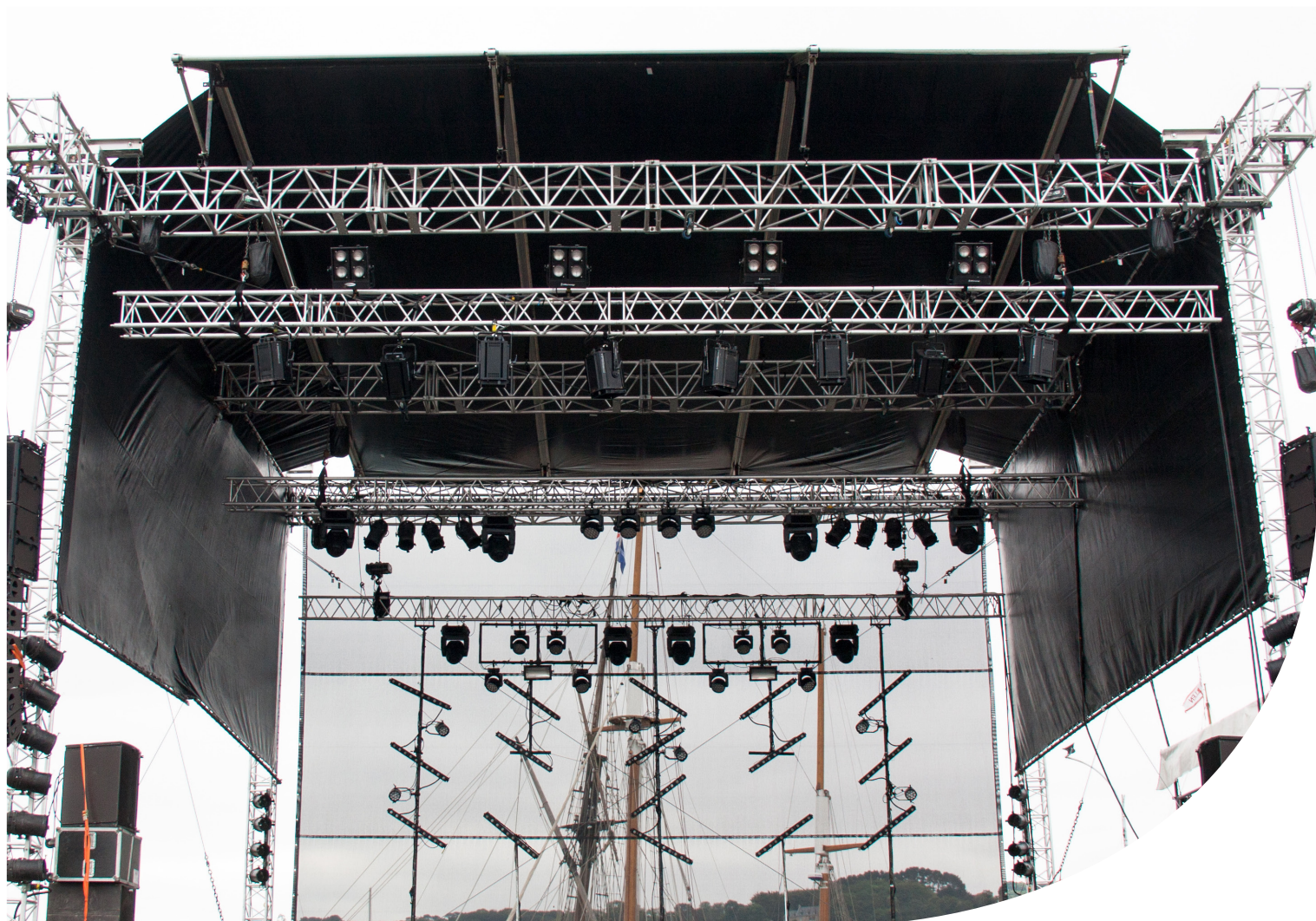



» Incredible **reversible opaque** fabric with **acoustic properties** in its **waterproof** version



CHARACTERISTICS

Name	Backstage CS	Ref	6707
Previous product name (<i>Teviloj</i>)	CS satin padding	Former name (<i>Azur</i>)	Backstage
Width	± 300 cm	Weight	± 320 g/m²
Flame-retardant rating	 M1,  B1	Composition	100% FR Polyester

» *Incredible reversible opaque fabric with acoustic properties in its waterproof version*

- » **Brushed** polyester **satin** on 1 side, providing great **opacity**
- » **Both sides have a different appearance** that can be used interchangeably **depending on your requirements**
- » **Washable**, particularly **hard-wearing** and **almost totally impervious to climatic variations**, it is ideal for the production of curtains installed in **places with high humidity** (amusement parks, water parks, etc.)
- » Available in **neutral colours** as well as **deep jet-black** making it perfectly suitable for making **legs and borders, black boxes, curtains**, etc.
- » Also available in 2 **Chroma Key** colours for **keyed photography** and **video** screen cloth
- » Inherently **M1** (longevity of the rating not limited), it **retains** its **flame-retardant properties** even after being **wet** or **washed**
- » Combining **robustness** and **opacity**, it is also suitable for **dressing structures, frames, outdoor stages**, etc.
- » **Sound absorption** properties

COLOURS



White
002



Black
003



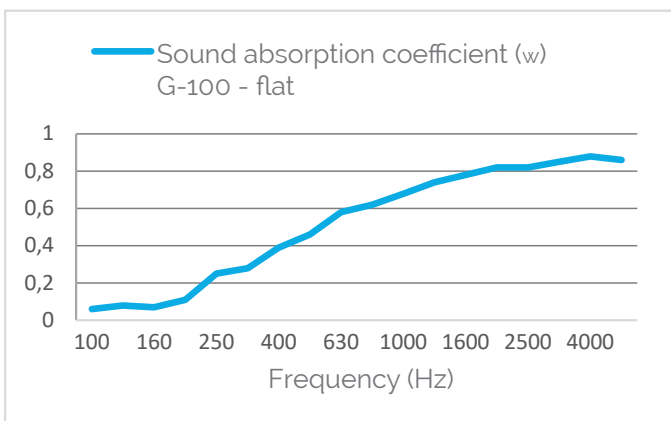
Chroma Key green
699



Chroma Key blue
799

ACOUSTICS

Acoustic properties	Standard ISO 354	
Weighted sound absorption coefficient (WSAC)	w = 0.50	Standard ISO 11654
Sound absorption class (SAC)	D (absorbent)	Standard ISO 11654
Noise reduction coefficient (NRC)	0.55 (<i>nominal value</i>)	Standard ASTM C423

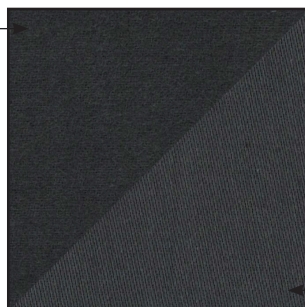


SPECIAL FEATURES

Two-material textile that can be used on both sides depending on the desired finish:

- » 1 side with a woven satin appearance
- » 1 side with a brushed fleece appearance

Fleece appearance



Satin appearance

ADDITIONAL INFORMATION

Thickness ± 0.6 mm

Appearance

Fabric with 2 different sides:

- » 1 side has a woven satin appearance with a moderate shine
- » 1 side has a brushed fleece appearance with a moderate shine

Supplied in Rolled into bales (1.50 m)

Average roll length ± 60 m

Cut-to-length Yes (minimum 5 linear metres)

Care     

Storage No specific recommendations

Directions for use

- » Can be made up to any dimensions and with all finishing options (eyelets or rivets, tabs, sleeves and leaded hems, etc.) in our workshops
- » Can be tensioned by stapling
- » Suitable for outdoor and indoor use

Recommended use

- » Curtains installed in wet environments (amusement parks, water parks, etc.)
- » Event curtains (outdoor stages etc.)
- » Canvas for keyed photography and videos (green and blue backdrops)
- » Screening curtains
- » Partition curtains
- » Dressing stands, structures, etc.

Accessories

- » Production accessories (straps, ballast chain, etc.)
- » Mounting accessories (knots, carabiners, etc.)

Printing Non-printable surface
Looking for a printable blackout canvas? We recommend you take a look at our "Blackout Print"

Tensile strength at break
Standard ISO 13934-1

Warp: ≥ 2000 N
Weft: ≥ 450 N

CONTACT OUR EXPORT TEAM

+33 (0)6 23 21 50 28



export@azur-scenic.com

The information in this document provides generic values that describe only the standard technical specifications and chemical composition of the products concerned. No guarantee is offered. Any images are non-contractual. The names of the colours are given for information purposes only and do not guarantee a specific colour.