



Attractive, silent and easy to install motorised screen  
For projections from 3 m to 4.50 m wide

A **motorised roller screen** available in **a range of dimensions** - from 3 to 4.50 m base - and **aspect ratios** - 1:1, 4:3, 16:9 and 16:10 - designed specially for medium-size projection surfaces.

Roller system is compatible with various projection screens (**front and rear**).

StudioScreen 3045 offers refined and **elegant design** thanks to its concealed mountings and cables, combined with a **silent motor**. Thanks to the multi-purpose wall and ceiling mountings included, it offers **easy installation** and can be used to equip both private screening rooms as well as small and medium public theatres.



## ▶ Technical specifications

### ▶ Cover

Canvas is fully protected by an aluminium body enclosed on both ends by steel panels.  
Black as standard colour (RAL 9005, Epoxy paint), other colours available.

### ▶ Motors

Tubular drive - smooth and silent

Standard order: 3-position wall-mounted switch *(optional remote radio-control available)*

Power: 10 Nm

Speed: 17 RPM.

Power supply: 230 V / 50 Hz

Power rating: 156 W

### ▶ Power supply

Power lead located to right of screen (seen from front)

### ▶ Weighting

Includes weighted pole: white for screens without border, black for screens with black border.

### ▶ Fixing

Multi-purpose mountings (wall or ceiling mountings) included

### ▶ Certification

StudioScreen 3045 is IMQ certified

Screens are flame-retardant rated (M1 / B1)

### ▶ Canvas finishes

Choose from:

Screen without borders

Canvas with black border (border 5 cm on sides and bottom, 30 cm at top)

## ▶ Compatible canvases

### ▶ Front-projection screens

- 240 cm matte white *(Flame-retardant rating: M1 + B1 - Gain: 1.2)*
- High contrast white blackout *(Flame-retardant rating: M1 + B1 - Gain: 1.2)*
- Ultra HD *(Flame-retardant rating: M1 - Gain: 1.2)*
- Microperforated matte white blackout *(Flame-retardant rating: M1 - Gain: 1.1)*

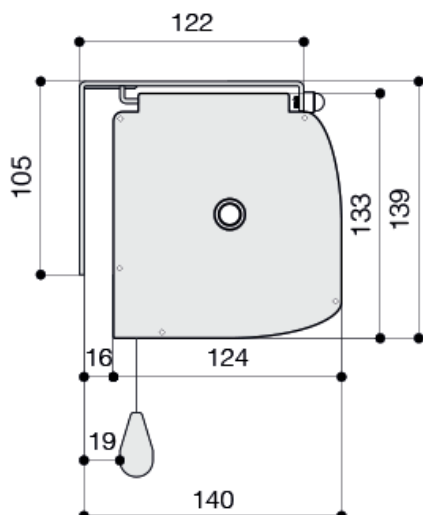
### ▶ Rear-projection

- Cream reverse *(Fire-retardant rating: M1 - Gain: 1.1 - 0.9)*
- Grey reverse *(Flame-retardant rating: M1 - Gain: 1.1 - 0.9)*

## ► Dimensions and weight

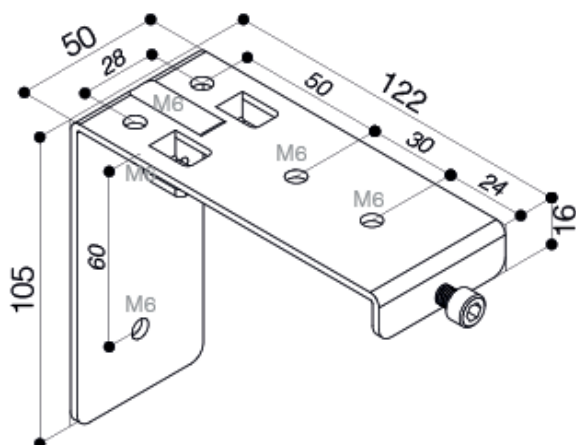
Image dimensions Width x Height (cm)				With black edges		Without black edges	
Ratio 1: 1	Ratio 4: 3	Ratio 16: 9	Ratio 16: 10	Cover length (cm)	Approx. weight (kg)	Cover length (cm)	Approx. weight (kg)
300 x 300	-	-	-	-	-	311	25
350 x 350	350 x 265	350 x 197	350 x 219	371	29	361	28
400 x 400	400 x 300	400 x 225	400 x 250	421	34	411	33
-	450 x 340	450 x 253	450 x 281	471	39	461	37

## ► Cover dimensions



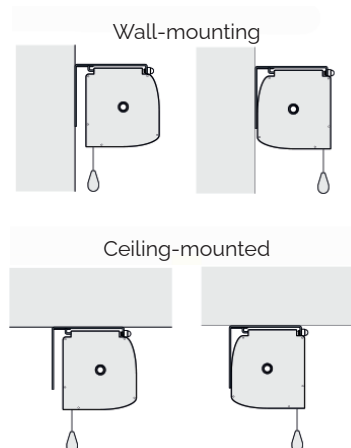
## ► Measurements for fastening

**Versatile mounting**  
Wall or ceiling mounting option



**Standard:**  
Fabric is  
lowered behind  
the cover

**Option:**  
Fabric is lowered  
in front of the  
cover



## ► Optional accessories

- Radio control with external receiver
- Radio control with internal receiver
- 12 V switch
- Low-voltage interface
- Lateral tensioning
- High-performance motor  
Even quicker and more silent (9 N.m, 26 rpm)



## CONTACT OUR EXPORT TEAM

+33 (0)6 23 21 50 28



[export@azur-scenic.com](mailto:export@azur-scenic.com)

The information in this document provides generic values that describe only the standard technical specifications and chemical composition of the products concerned. No guarantee is offered. Any images are non-contractual. The names of the colours are given for information purposes only and do not guarantee a specific colour.